

Disaster management when an "Off the Coast of Hokkaido and Sanriku Subsequent Earthquake Advisory" is issued

Need for immediate evacuation in the event of an earthquake

Be ready to evacuate immediately from tsunamis if you feel tremors or a tsunami warning is issued

Be ready to evacuate even during the night

- ☐ Wear clothes suitable for a quick escape
- ☐ Stay in the same room as children, the elderly, or others requiring special care
- ☐ Use the room that is the safest and easiest to escape from



Keep an emergency kit on hand

- ☐ Carry an emergency kit with you during the day, and keep it by your bed during the night
- ☐ Carry your ID and valuables with you at all times
- ☐ Keep cold weather gear on hand for cold and snowy weather

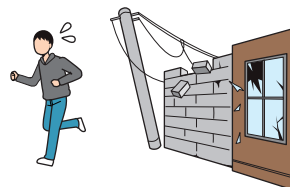


Places at high risk from earthquakes

Ensuring safety from potential risks

Be ready for collapses caused by earthquakes

- ☐ Stay away from damaged buildings and fragile concrete block walls as much as possible



Beware of landslides

- ☐ Stay away from areas with a high risk of landslides due to the preceding earthquakes as much as possible
- ☐ Avoid sleeping in buildings that are near cliffs if there is a risk of landslides
- ☐ If staying at a place where it is difficult to evacuate from a tsunami after an earthquake, beware of the risk, and stay alert at all times



Essential preparations for everyone while staying alert for subsequent earthquakes

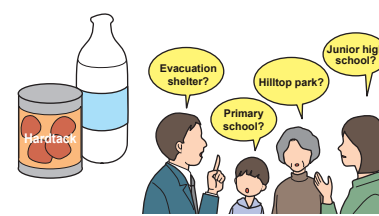
Ensure access to emergency information

- ☐ Keep the speaker volume of cell phones, etc. that can receive emergency information higher than normal
- ☐ Place radios or receivers for disaster administration wireless communications in daily life spaces



Reconfirm daily preparations

- ☐ Water, food, and other supplies
- ☐ Evacuation shelters, routes, etc.
- ☐ Means to contact family members
- ☐ Secure furniture
- ☐ Disaster drills at the community level

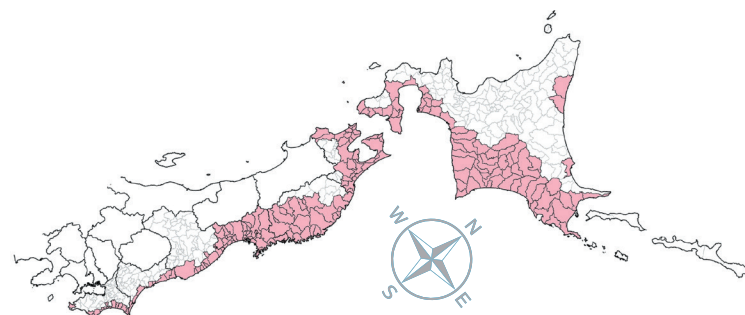


Areas for disaster preparedness when an "Off the Coast of Hokkaido and Sanriku Subsequent Earthquake Advisory" is issued

The areas range from Hokkaido to Chiba prefectures.

Basic concept of areas for disaster management

- Areas with a seismic intensity of lower 6 or higher
- Areas where tsunami heights are 3 m or more
- Areas where disaster preparedness is considered necessary to ensure the integrity of disaster management for earthquakes



Contact



Counselor (Research and Planning)
to the Deputy Cabinet Secretary for Disaster Management

Central Government Building No. 8, 1-6-1 Nagatacho, Chiyoda City, Tokyo 100-8914
TEL: 03-5253-2111 (main switchboard) FAX: 03-3501-6820
https://www.bousai.go.jp/jishin/nihonkaiko_chishima/hokkaido/index.html



Seismological and Volcanological Department

3-6-9 Toranomon, Minato City, Tokyo 105-8431
TEL: 03-6758-3900 (main) FAX: 03-3434-9086
<https://www.data.jma.go.jp/eqev/data/nceq/index.html>



Megaquakes along the Japan and Chishima Trenches

--Preparations--

Knowledge can save your life and the lives of your loved ones

In the region along the Japan and Chishima Trenches, a wide variety of earthquakes have occurred, including those on plate boundaries, causing great damage many times. Stay prepared for sudden earthquakes, and be ready for subsequent earthquakes if an "Off the Coast of Hokkaido and Sanriku Subsequent Earthquake Advisory" is issued.

Source region of the Tohoku-Pacific Ocean Earthquake

The probable source region of megaquakes along the Japan and Chishima Trenches

Maximum seismic intensity of

7

Expected tsunami height

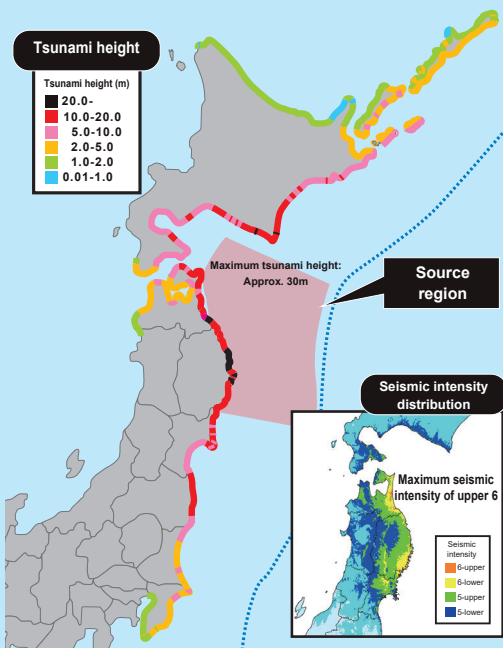
Up to 30m

Date of issue: February 2025

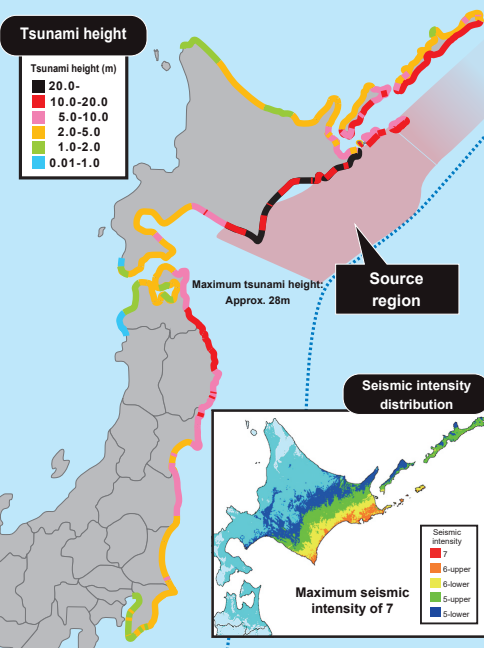
Expected tsunami and seismic intensity

If a huge earthquake occurs along the Japan and Chishima Trenches, significant damage may occur over a wide area from Hokkaido to Chiba prefectures. Tsunamis could cause severe damage, especially in coastal areas. Areas where major damage is anticipated need to prepare for massive earthquakes along the Japan and Chishima Trenches.

Earthquakes along the Japan Trench



Earthquakes along the Chishima Trench



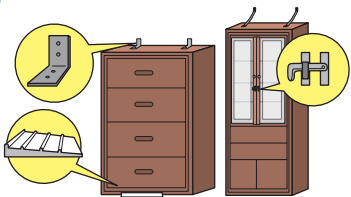
Damage Estimates and Disaster Prevention Measures

- If an M9 class huge earthquake occurs, ***approximately 199,000 people will die in the worst case***
- Even after escaping from a tsunami, the risk of **death from hypothermia increases due to prolonged exposure to cold conditions**
- **Damage can be reduced by approximately 80% through preparing in advance, such as improving evacuation awareness and preparing cold weather gear**

Note: An M9.1 earthquake occurs off the coast of Sanriku and Hidaka along the Japan Trench in the middle of the night in winter or when residents have a low awareness of the need to evacuate

Stay prepared for earthquakes on a regular basis

Secure furniture



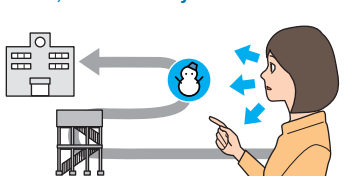
Prepare an emergency backpack kit



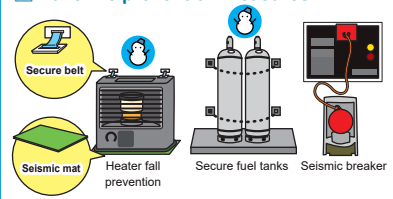
Stockpile water and food



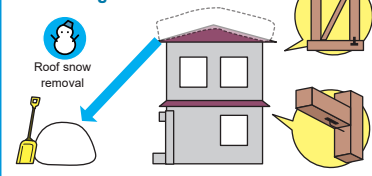
Check evacuation shelters, evacuation routes, and secondary evacuation routes



Take fire prevention measures



Earthquake-proofing of buildings



: Preparations especially in snowy and cold regions

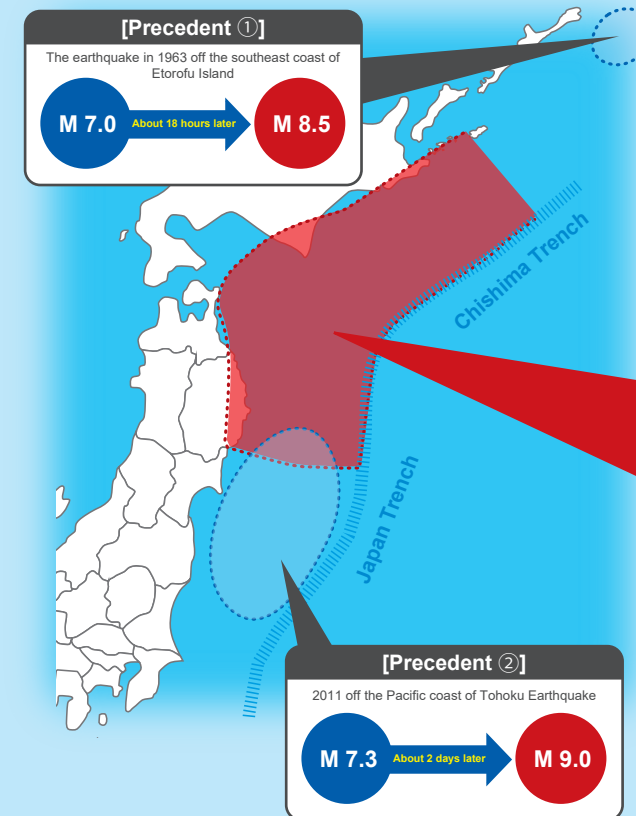
Stay prepared to protect your life and the lives of your loved ones in the event of a sudden earthquake

Prepare for potential huge earthquakes to follow

- Off the Coast of Hokkaido and Sanriku Subsequent Earthquake Advisory -

In the areas along the Japan and Chishima Trenches, there have been cases where a large earthquake (a subsequent earthquake) followed a magnitude 7 class earthquake. To save as many lives as possible, an "Off the Coast of Hokkaido and Sanriku Subsequent Earthquake Advisory" is issued when an M7 or higher earthquake occurs in or around the probable source region due to the relatively higher possibility of subsequent large earthquakes than usual, despite the low likelihood of occurrence.

When an advisory is issued, reconfirm your usual earthquake preparations while continuing your socioeconomic activities for about a week after the earthquake, and be ready to evacuate immediately if you feel a tremor or a tsunami warning is issued.



The probable source region of megaquakes along the Japan and Chishima Trenches

If a M7.0 or greater earthquake occurs in or around the probable source region (it varies depending on the magnitude)...

Another megaquake may follow! Be prepared when:

"Off the Coast of Hokkaido and Sanriku Subsequent Earthquake Advisory" is issued



*M: Magnitude indicating the scale of the earthquake

Notes on the Off the Coast of Hokkaido and Sanriku Subsequent Earthquake Advisory

! Taking into account global examples, the probability of subsequent earthquakes is about one in a hundred, so it is not guaranteed that a large subsequent earthquake will occur within a week.

! It is important to prepare for earthquakes on a daily basis, assuming that a huge earthquake will occur suddenly without any prior announcement of an advisory.

! The national and local governments are not calling for advance evacuations, but for about a week after an earthquake, you should be more cautious than usual about a large earthquake, and be ready to evacuate immediately if you feel tremors or a tsunami warning is issued.

! The one-week period takes into account the limit to which people can continue to respond, so it does not mean that the possibility of subsequent earthquakes will disappear after one week. You should stay alert for earthquakes.